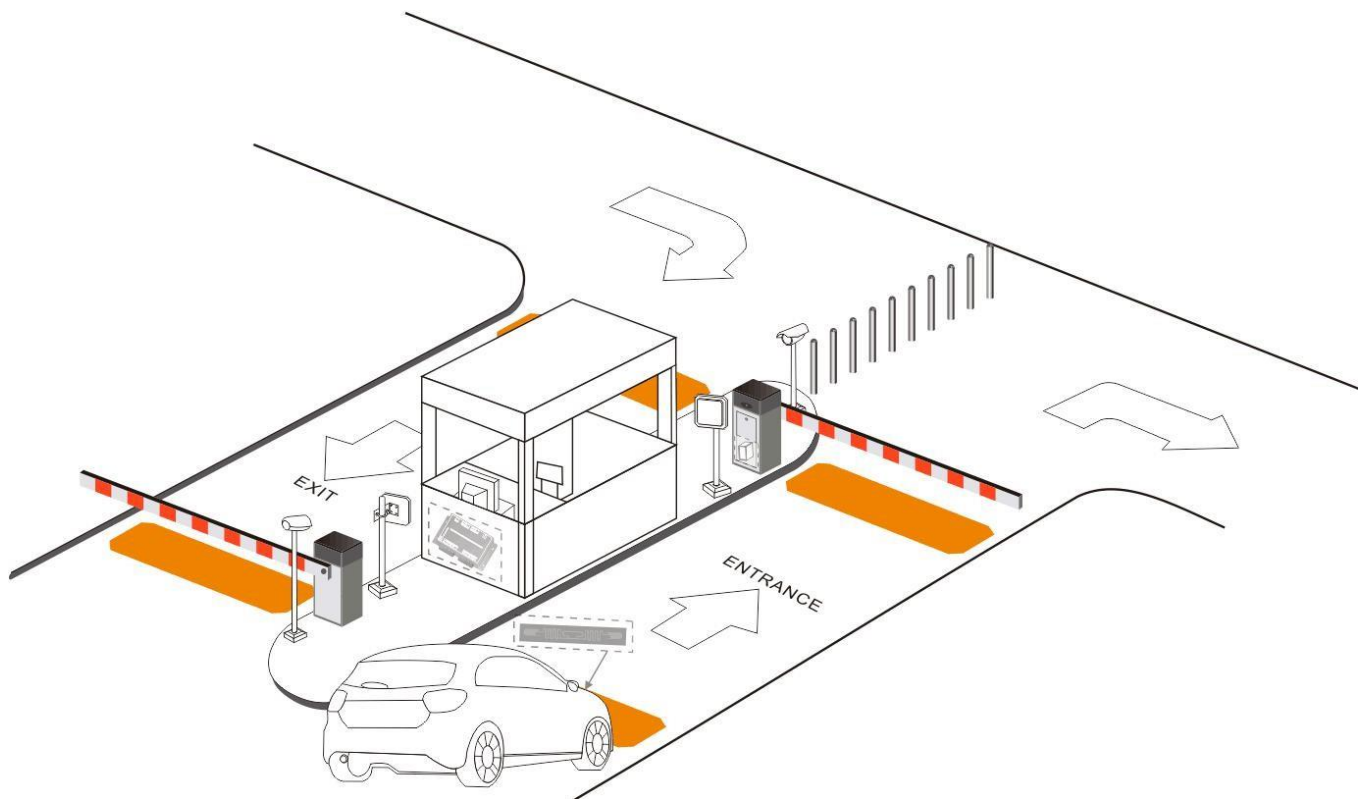


# YCH Passive Long Range Hands Free Parking Solution



Add: 42, Jalan Ekoflora 5/19, Taman Ekoflora, 81100 Johor Bahru, Johor  
Tel: +6016-718 0781  
E-mail: [marketing@ychsecuritysystem.com](mailto:marketing@ychsecuritysystem.com)

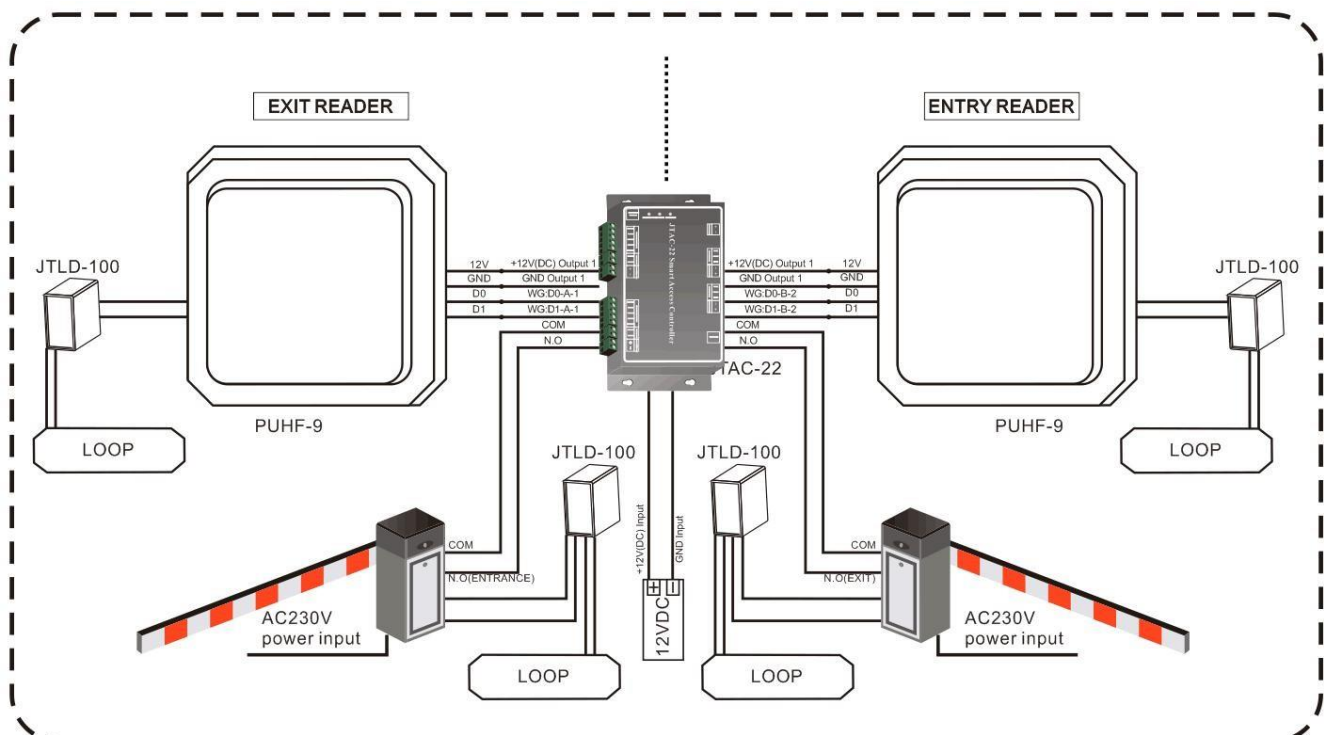
## System Description:

**YCH passive low cost hands free parking solution**, which has Integrated UHF long range reader, using the UHF band RFID technology; It is targeted for low budget car parking access control system solution. This solution main be used in long range parking system, customers can select YCH Parking control broad and use YCH whole parking access control software, customers also can integrate into their own parking access control software by Wigand 26/34 interface or RS485, This solution main be used in total hands free parking solution. By TCP/IP connect to YCH parking access control software directly and no need additional convertor, It is very easy and convenient for the users. For this solution, in rainy day no need to wind down vehicle window, no need use your hands to take card, totally hands free but low cost solution.

## System Highlight:

- ◇ Operating frequency 860 ~ 868MHz or 902 ~ 928MHz, adjusted according to different countries and regions;
- ◇ Wigand 26/34 interface, customers can select our whole solution or can easy to integrate different access control system;
- ◇ IP 65 Waterproof Rate, no need to add additional device for the rainy days;
- ◇ Reader inside Built-in lightning protection device;
- ◇ Directional antenna technology, recognizes only the front of the card reader;
- ◇ Power is less than 0.5W, in line with international environmental standards;
- ◇ Used in a metal chassis, or used independently;
- ◇ Reading distance 8-10 meters (depending on the antenna);
- ◇ Support eligible ISO1800-6B, ISO1800-6C (EPC G2) protocol passive RFID cards;
- ◇ Working mode: ground sensor mode or continuous mode;
- ◇ Reserve RS232 \ RS485 interface, which can be connected to a PC.
- ◇ 26,000 users in max
- ◇ 100,000 records can be saved(cycle/lost)
- ◇ 64 different time zone groups can be setting according to customer different requirement.
- ◇ CCTV system integration and image compare function which makes the community and property safe.
- ◇ Suit for Long range parking system

## Installation Diagram:



## Configuration List (Standards with one exit and one entrance in parking application)

Model	Qty	Details	Remark
JTUHP-9	2	Long range reader	✓
JTU6C-9B	2	Long range smart tag	✓
JTLD-100	4	Vehicle loop detector	✓
JTBR-100	2	Gate barrier	✓
JTAC-22	1	TCP/IP controller	✓
JTAB-1	1	Metal box with camp lock	Optional
Nova150	1	Backup battery	Optional
Surge protector	3	Signal /power protect	Optional

**YCH Parking Access Control software** offer clean and simple screen and which make the safe guard feel comfortable and easy to operation. It allow simplified interface to add / edit / delete users. YCH Parking Access Control Software also offers filtering option to customized report as per your need. Text file database is easier to manage and can be installed into any low end PC.

The screenshot displays the 'RFID SYSTEM' interface with a 'Report' window open. The report table contains the following data:

No.	Card ID	User	Worker No.	Department	Date	Time	Door	Tag Name	Description
00001	2336834643	Bella	000003	Quality	03/16/2016	10:26:16	15090235-1	[Default]	Anti-Detecting
00002	2337110563	-	-	-	03/16/2016	10:26:12	15090235-1	[Default]	Illegal Card
00003	1610726212	-	-	-	03/16/2016	10:26:10	15090235-1	[Default]	Illegal Card
00004	2336426739	-	-	-	03/16/2016	10:26:09	15090235-1	[Default]	Illegal Card
00005	2049416050	Felicia	000002	Personnel	03/16/2016	10:26:06	15090235-1	[Default]	Allowed
00006	2049416050	Felicia	000002	Personnel	03/16/2016	10:26:05	15090235-1	[Default]	Allowed
00007	2336834643	Bella	000003	Quality	03/16/2016	10:25:57	15090235-1	[Default]	Allowed
00008	2336834643	Bella	000003	Quality	03/16/2016	10:25:50	15090235-1	[Default]	Allowed
00009	0575049286	-	-	-	03/16/2016	10:25:45	15090235-1	[Default]	Illegal Card
00010	2336834643	Bella	000003	Quality	03/16/2016	10:25:31	15090235-1	[Default]	Allowed
00011	2336834643	Bella	000003	Quality	03/16/2016	09:57:33	15090235-1	[Default]	Allowed
00012	2049416050	Felicia	000002	Personnel	03/16/2016	09:45:35	15090235-1	[Default]	Allowed
00013	2336834643	Bella	000003	Quality	03/16/2016	09:45:13	15090235-1	[Default]	Allowed
00014	2336834643	Bella	000003	Quality	03/16/2016	09:45:12	15090235-1	[Default]	Allowed
00015	2336834643	Bella	000003	Quality	03/16/2016	09:45:10	15090235-1	[Default]	Allowed
00016	2336834643	Bella	000003	Quality	03/16/2016	09:45:09	15090235-1	[Default]	Allowed
00017	2336834643	Bella	000003	Quality	03/16/2016	09:45:08	15090235-1	[Default]	Allowed
00018	2336834643	Bella	000003	Quality	03/16/2016	09:45:05	15090235-1	[Default]	Allowed
00019	2049416050	Felicia	000002	Personnel	03/16/2016	09:45:01	15090235-1	[Default]	Allowed
00020	2336834643	Bella	000003	Quality	03/16/2016	09:44:58	15090235-1	[Default]	Allowed
00021	2049416050	Felicia	000002	Personnel	03/16/2016	09:44:54	15090235-1	[Default]	Allowed
00022	2336834643	Bella	000003	Quality	03/16/2016	09:44:35	15090235-1	[Default]	Allowed
00023	2049416050	Felicia	000002	Personnel	03/16/2016	09:43:34	15090235-1	[Default]	Allowed
00024	2336834643	Bella	000003	Quality	03/16/2016	09:43:29	15090235-1	[Default]	Allowed
00025	2049416050	Felicia	000002	Personnel	03/16/2016	09:32:45	15090235-1	[Default]	Allowed

The interface also shows a 'NO PIC' warning and a 'Transaction' window with a 'Protect' icon.

Clean interface easier to review all online transaction

The screenshot displays the 'Edit User' form for user 'Helen'. The form includes the following fields:

- Name: Helen
- Card ID: 2336834643 (Selected)
- More Formats:
- Personal Password: No Password+#  Card + PIN
- Worker No.: 000003
- Card Code: 000003
- Religion: Other
- Gender: Male
- Department: Business (Selected)
- Dept No.: Business
- Rank: Manager
- Attendance:

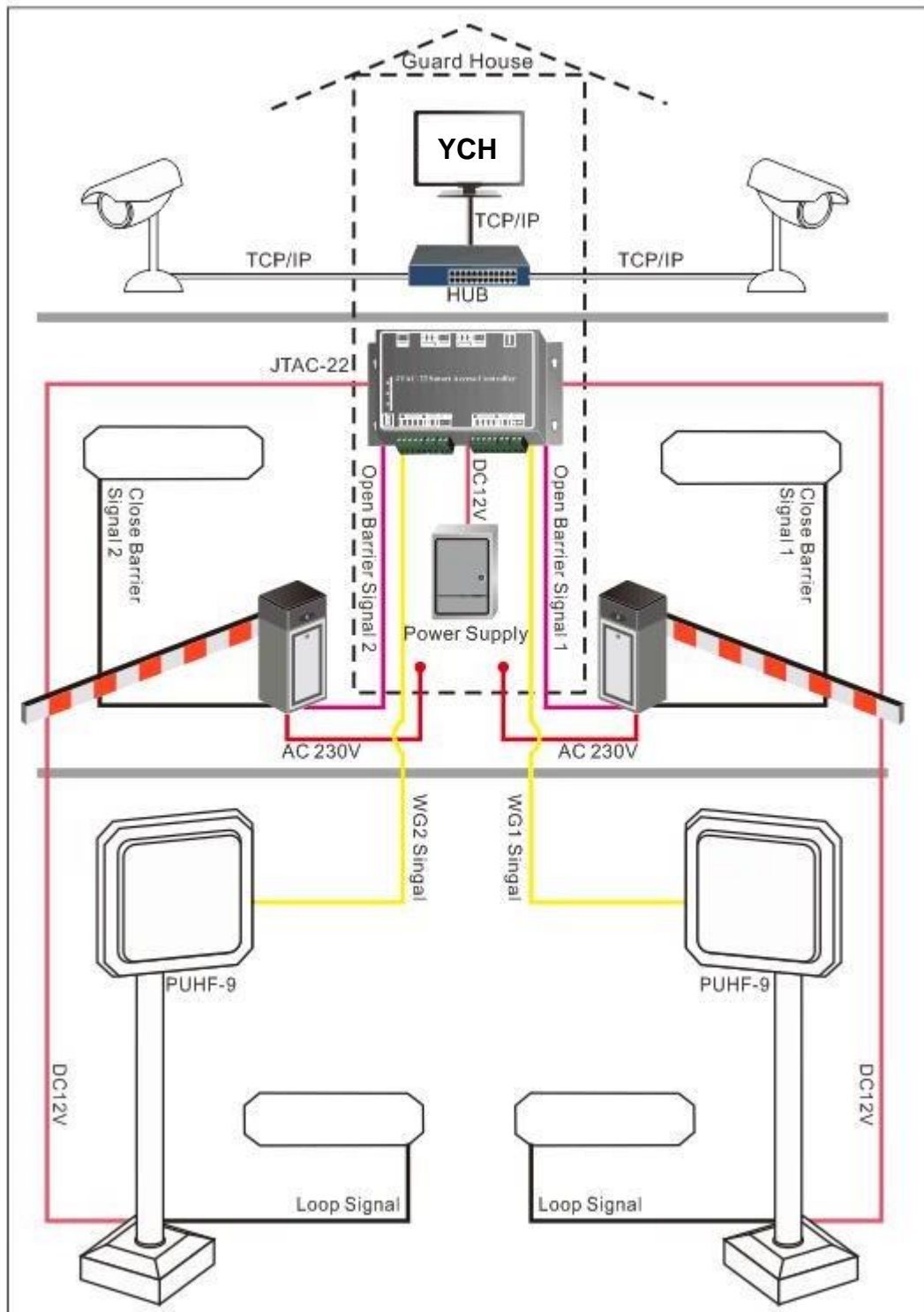
The form also includes a 'Picture' field with a photo of Helen and buttons for 'Save + Add', 'Save', and 'Exit'.

User database

Easy report filtering

## **System working principle:**

- When the vehicle on the loops which connect to the entry long range reader. YCH smart tag will communicate with long range reader;
- After reader received the tag signal and send the data to controller by Wigand interface, barrier will open automatically after judging the card ID is valid. (if invalid , barrier will not open)
- After the vehicle passed the second loops under the entry barrier, and the barrier arm will down automatically;
- The software in the manager Centre will show the real on line transaction event , and also can export EXCEL report
- When the vehicle on the loops which connect to the exit long range reader, YCH Smart tag will communicate with long range reader
- After reader received the tag signal and send the data to controller by Wigand interface, barrier will open automatically after judging the card ID is valid. (if invalid , barrier will not open)
- After the vehicle passed the second loops under the exit barrier, and the barrier arm will down automatically;



Note: Under Anit-passback function, if want to re-entry, the vehicle must exit firstly after entrance. This function is for avoiding invalid entry if some people not have valid card or not belong to this residence community.

Note: **Do not stick the card in the palm of the hand or on the body, and do not use the card posted on the metal object, it will affect the reader results.**